

INSTALLING ASSEMBLIES FOR TWO APPLIANCES

The appliance assembly kit can be used only for Vision electric appliances, and their content varies based on the model and size of the appliance in the assembly. After unpacking the kit, check it against the packing slip for completeness.

SETTING UP AND INSTALLING THE ASSEMBLIES FOR TWO APPLIANCES

- Set the base (1) at the required location and use the height-adjustable feet to even it out to horizontal position. (Use a bubble level.)
- Remove the left cover (11) of the appliance, which will be at the bottom of the assembly. Then remove the composite strut (2) supplied in the assembly kit. Slide the individual parts of the strut behind the internal components, and insert and tighten it underneath the screw of the left rear foot.
- For 623/623 assemblies, it is necessary to remove the rear ventilation cover (25). Screw the strut (2) to the base surface.
- Put the left cover back on.
- Place the appliance on the base such that the base's pins (17) fall into the holes in the appliance feet (18).
- Temporarily remove the upper door hinge (9) and door (10).
- Apply silicone sealant around the flap and chimney holes for sealing against running water.
- On the roof off the lower appliance, place the stiffening plate with pegs (7).
- Reinstall the door (10).
- Adjust the door according to the door adjustment instructions.

For assembly 0623/0623:

- Slip the adapter with the seal (27) on the chimney of the lower appliance. Next attach the plastic joints in the order 45° and 90°.

For assembly 0611/0611, 0611/1011 including gas appliances:

- Slip the joint with O-ring (4) on the chimney of the lower appliance.
- For a gas appliance, slip the seal (22) onto the screws of the stiffening plate (7) and then screw on the external gas flue.

In addition, for both sets:

- Place the second appliance on top of the first one so that the pins on the stiffening plate (16) fall into the holes in the feet (19) of the upper appliance.
- Use the height-adjustable feet to even the appliance into an horizontal position. (Use a bubble level.)
- On assembly 623/623, slide the adapter (27) onto the upper appliance's drain. Install the sheet-metal base (28), insert the aforementioned adapter, and screw it to the stiffening plate (7) with just one screw.
- Connect the outdoor chimney (5) using the connection hose (12) and clamps (13) and fasten it to the internal ventilation chimney (15).
- Screw the side connection covers (3, 6, 8) to the holder of the stiffening plate so that first you place the front cover (8), then the right cover (7), and then the hole (20) including the seal (21) in the left cover (3), thread the spray hose through and screw on the cover.
- Connect both appliances to the electrical grid and with the drain joint (14) (29) into the drain according the installation instructions.

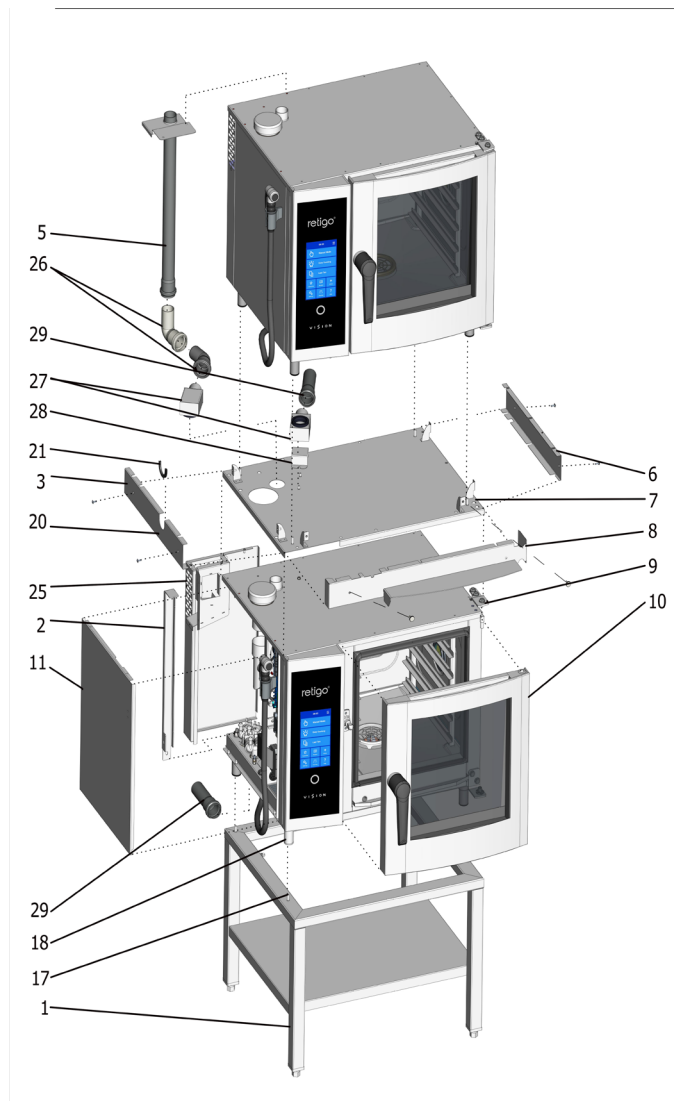


Figure II.24 - Assembly of two devices 0623 and 0623

POSITION: 1 - pedestal under assembly, 2 - brace, 3 - left connecting cover, 5 - external chimney with attachment, 6 - right-hand connection cover, 7 - reinforcement sheet, 8 - front connection cover, 9 - upper door hinges, 10 - door, 11 - left cover of lower appliance, 16 - pins on reinforcement plate, 17 - pins on pedestal, 18 - feet of bottom appliance, 19 - feet of upper appliance, 20 - hole for shower hose, 21 - rubber bushing, 25 - back cover with ventilation, 26 - plastic joints 45° and 90°, 27 - adapter, 28 - sheet metal pedestal, 29 - plastic tube.

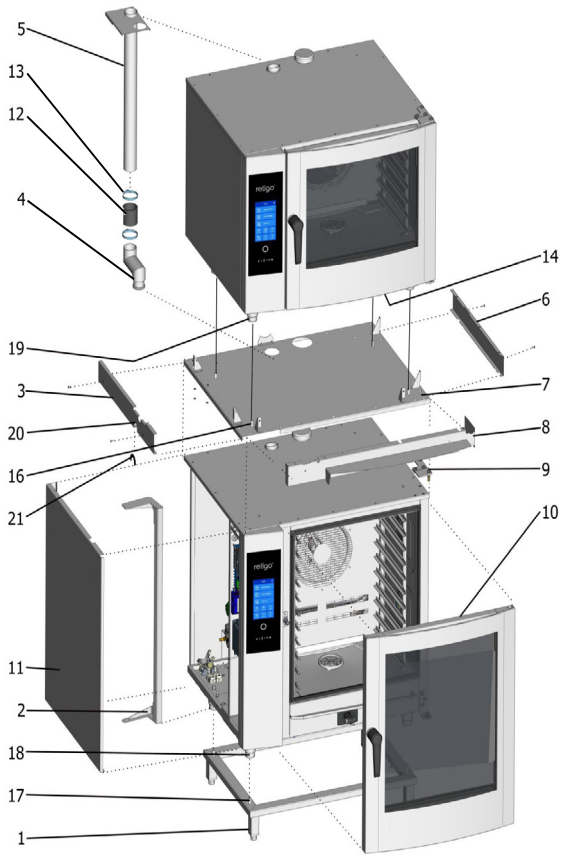


Figure II.25 - Assembly of two electrical appliances 0611 and 1011

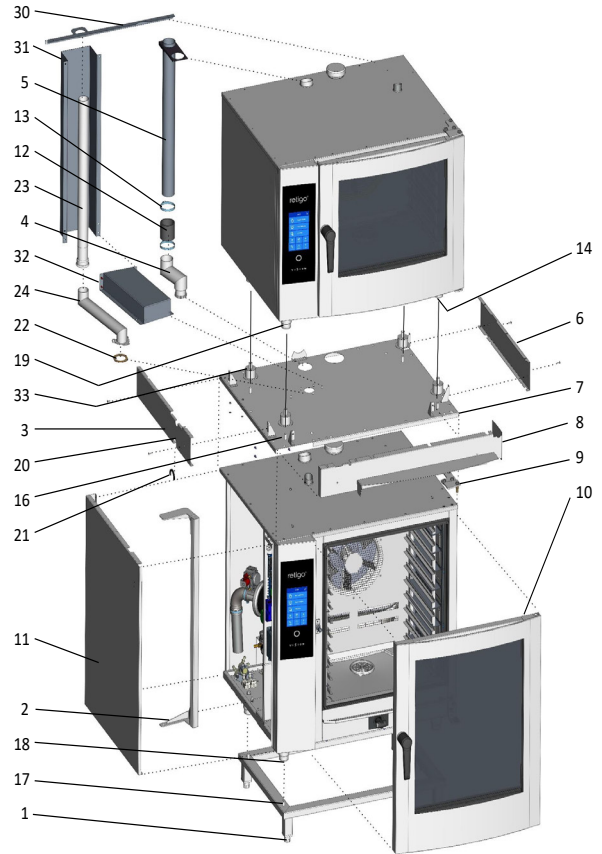


Figure II. 25a - Assembly of two gas appliances 0611 and 1011

POSITION: 1 - pedestal under assembly, 2 - brace, 3 - left connecting cover, 4 - joint with O-ring, 5 - external chimney with attachment, 6 - right-hand connection cover, 7 - reinforcement sheet, 8 - front connection cover, 9 - upper door hinges, 10 - door, 11 - left cover of lower appliance, 12 - connecting hoses, 13 - hasp, 14 - drain joint of upper appliance, 15 - chimney of upper appliance, 16 - pins on reinforcement plate, 17 - pins on pedestal, 18 - feet of bottom appliance, 19 - feet of upper appliance, 20 - hole for shower hose, 21 - rubber bushing, 22 - sealing ring, 23 - external gas chimney, 24 - flue gas chimney coupling, 25 - back cover with ventilation, 26 - plastic joints 45° and 90°, 27 - adapter, 28 - sheet metal pedestal, 29 - plastic tube, 30 - cover mounting, 31 - thermal cover rear, 32 - thermal cover bottom